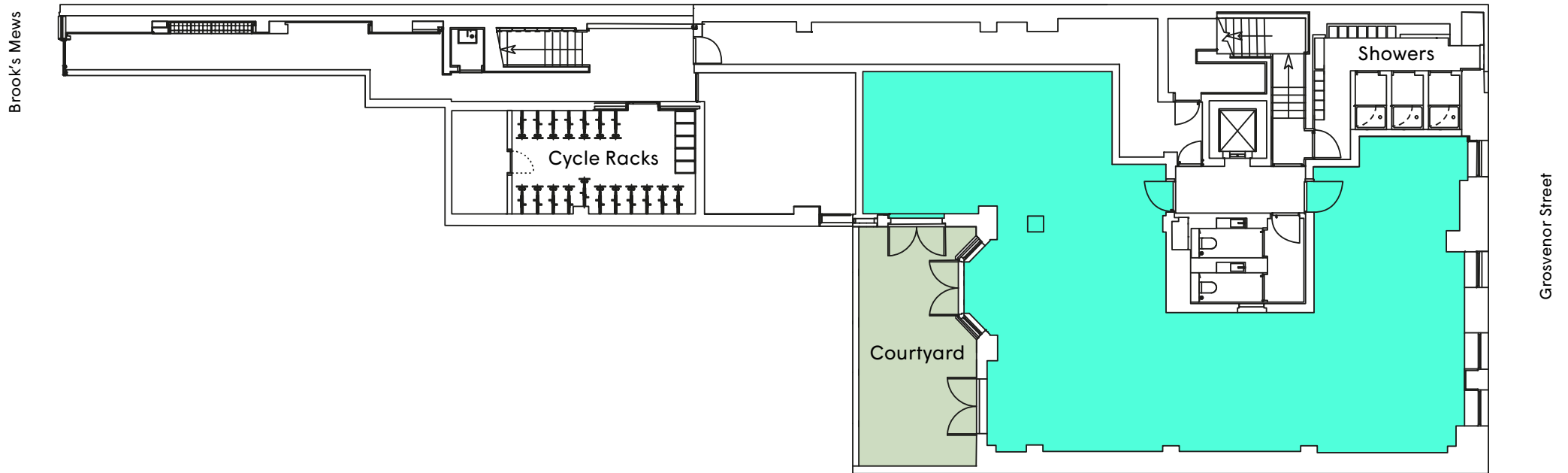


Lower Ground Floor  
1,556 Sq Ft (144.6 Sq M)



● Available space ● Terrace / Courtyard

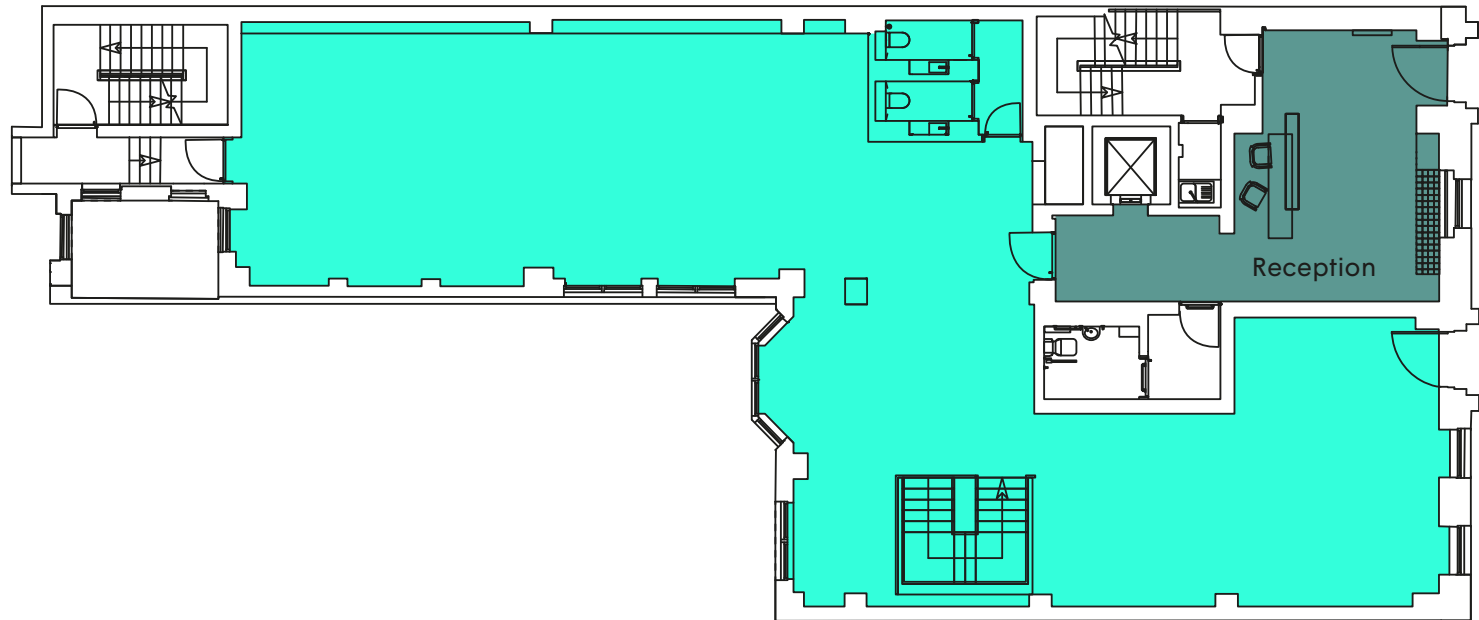


Plans for indicative purposes only. Not to scale.

Ground Floor

2,049 Sq Ft (190.4 Sq M)

Brook's Mews



Grosvenor Street

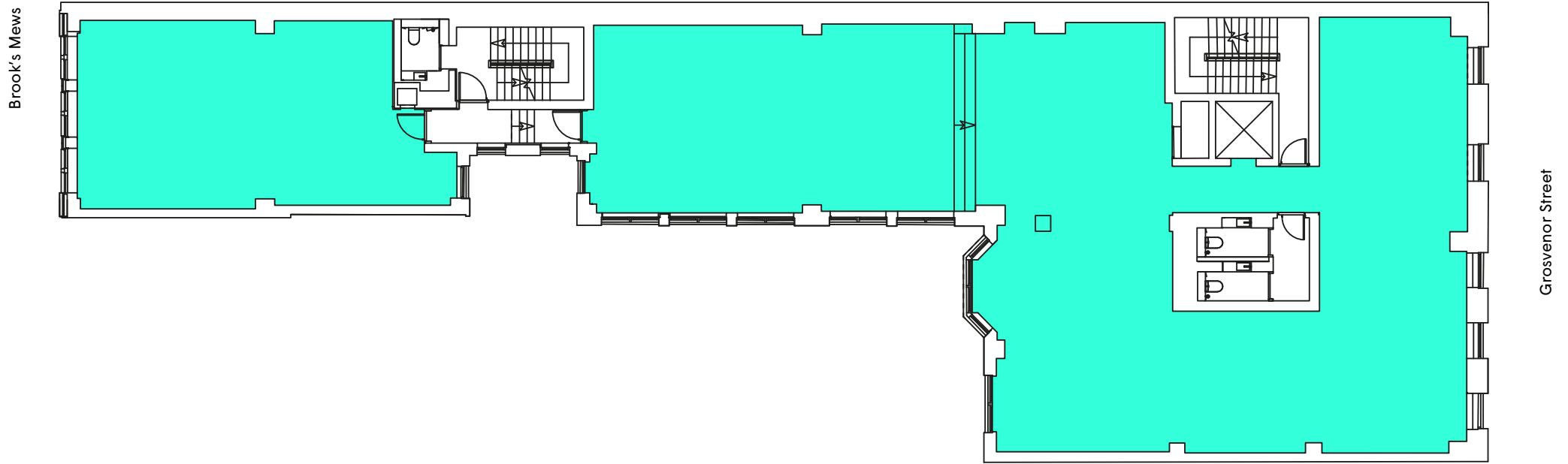
● Available space ● Terrace / Courtyard



Plans for indicative purposes only. Not to scale.

First Floor

3,174 Sq Ft (294.9 Sq M)



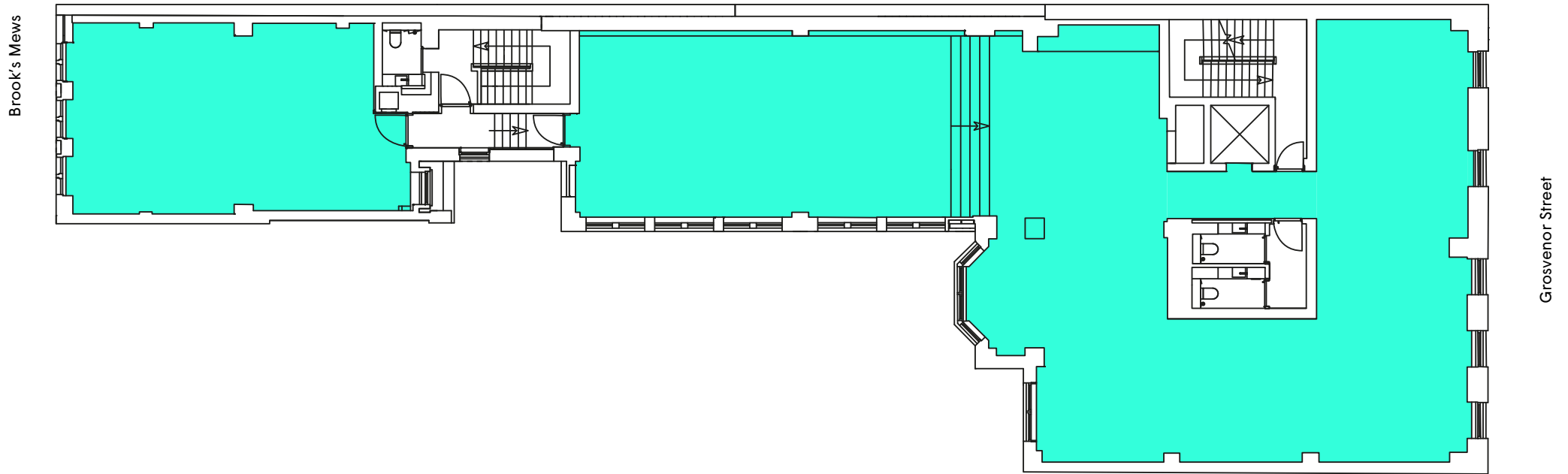
● Available space ● Terrace / Courtyard



Plans for indicative purposes only. Not to scale.

Second Floor

3,094 Sq Ft (287.4 Sq M)



● Available space ● Terrace / Courtyard

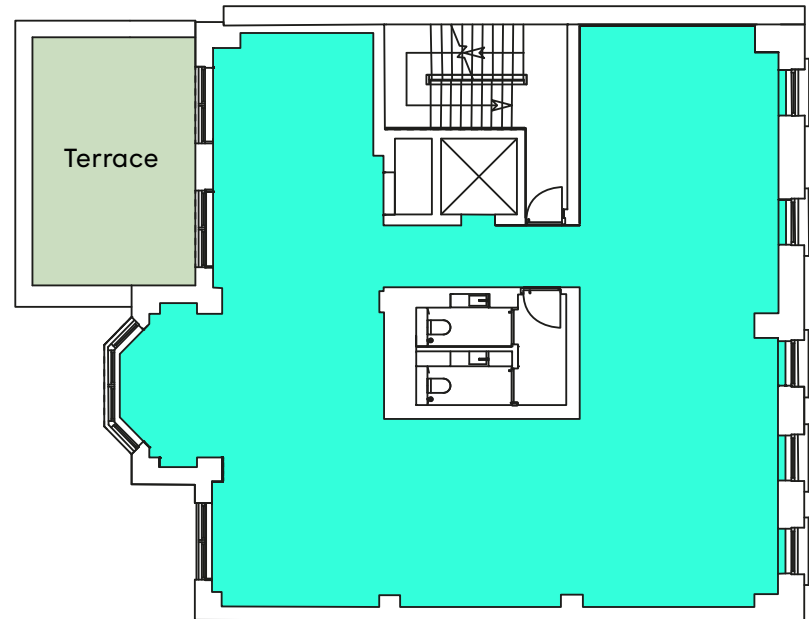


Plans for indicative purposes only. Not to scale.

Third Floor

1,546 Sq Ft (143.6 Sq M)

Brook's Mews



Grosvenor Street

● Available space ● Terrace / Courtyard

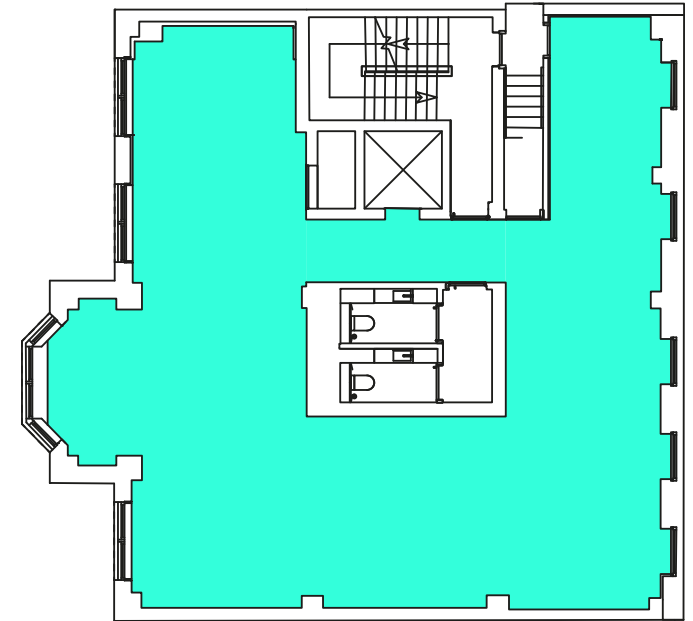


Plans for indicative purposes only. Not to scale.

Fourth Floor

1,334 Sq Ft (124.9 Sq M)

Brook's Mews



Grosvenor Street

● Available space ● Terrace / Courtyard

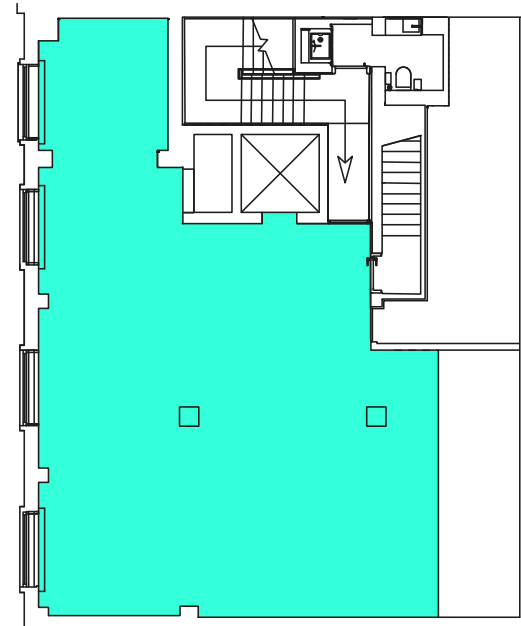


Plans for indicative purposes only. Not to scale.

Fifth Floor

945 Sq Ft (87.8 Sq M)

Brook's Mews



Grosvenor Street

● Available space ● Terrace / Courtyard



Plans for indicative purposes only. Not to scale.